



# JAW CRUSHER

YUNNAN KUNMING HEAVY MINING MACHINERY



## Brief Intro of JAW CRUSHER<sub>(version 1.0)</sub>

YUNNAN KUNMING HEAVY MINING MACHINERY Co., LTD

Tel: +86-871-3540976      Mobile: +86-13508712656

MSN: Rockeyhan@hotmail.com      E-Mail: Support@Kunmingzhongji.com

Web-Site: <http://www.KunMingZhongJi.Com>





## Yunnan Kunming Heavy Mining Machine—Jaw Crusher



Jaw Crusher manufactured by K.M.M is the ideal equipment to crush all kinds of mining stones, the largest compression resistance of the raw material is up to 320MPa. Our [jaw crusher](#) can be used as the primary and secondary crushing to produce the aggregate for subgrade, railway ballast and construction sand & Stone, building material, chemical industry, metallurgy industry etc.

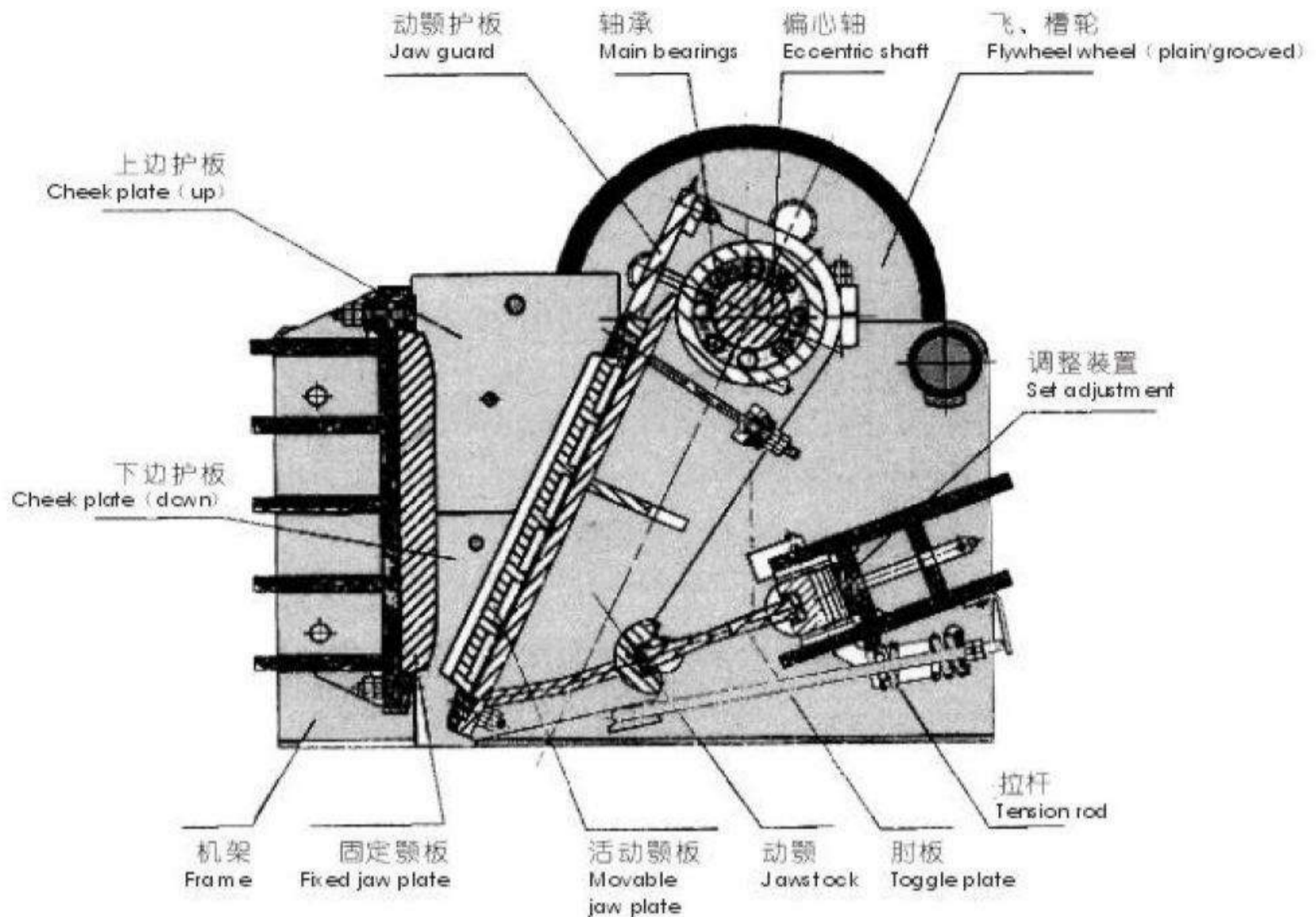


This series of jaw crusher is reliable and efficient. With design of the large feed opening and force-feeding action, our jaw crusher can increase the capacity.

For more information, please visit the web page: <http://www.kunmingzhongji.com/products/jaw-crusher.html> .

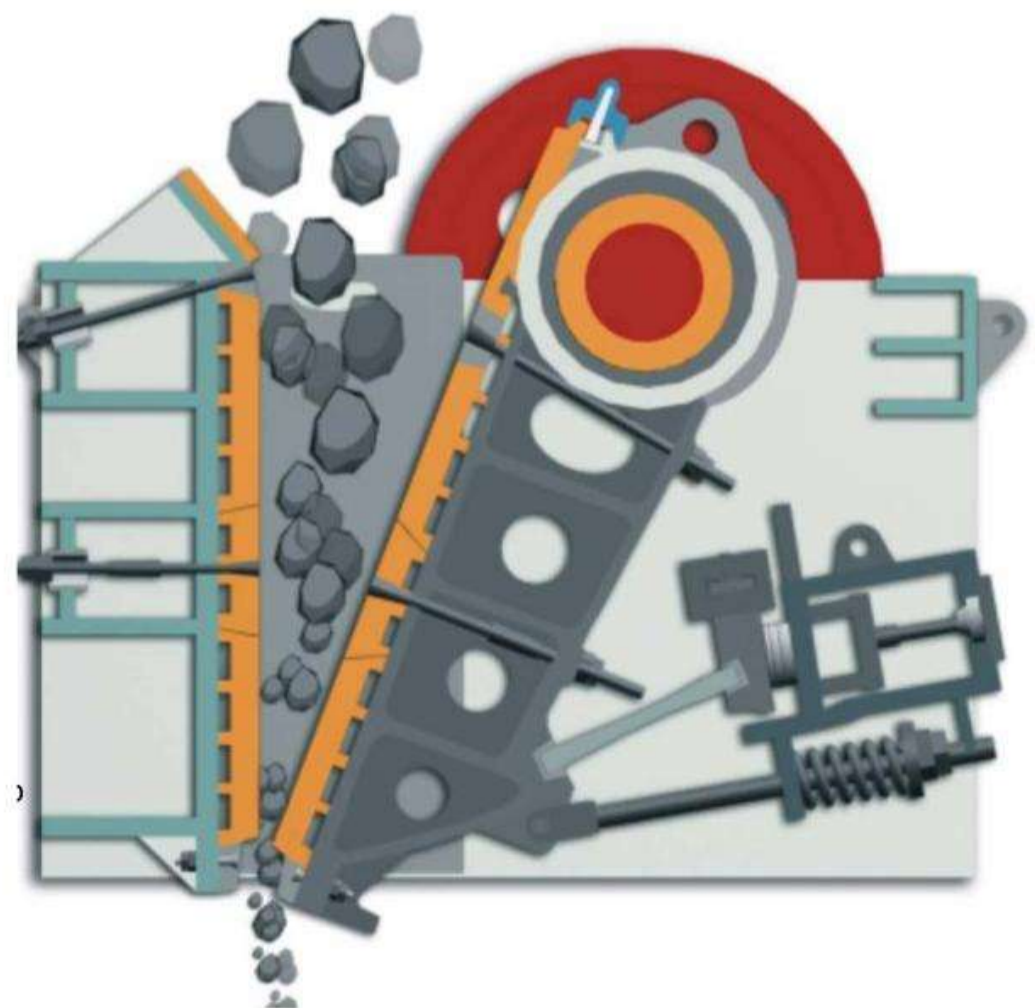


## Structure characteristics

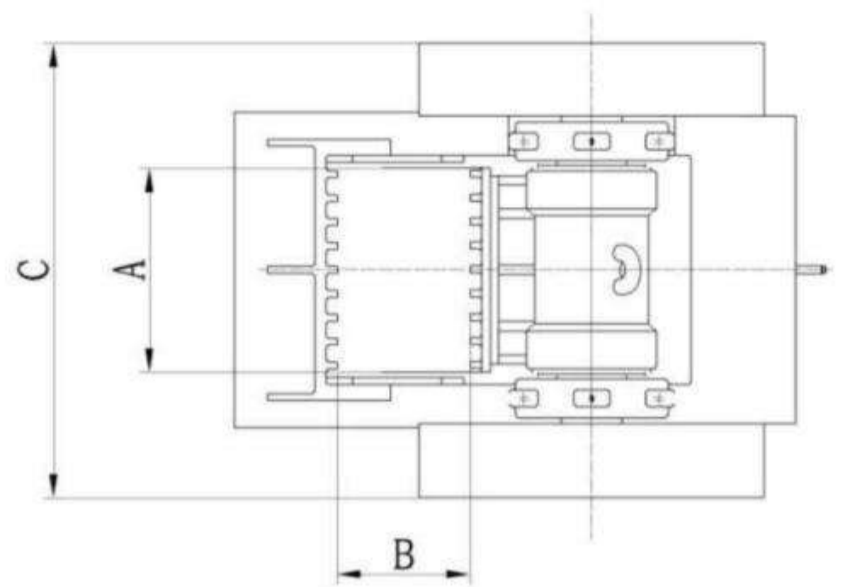
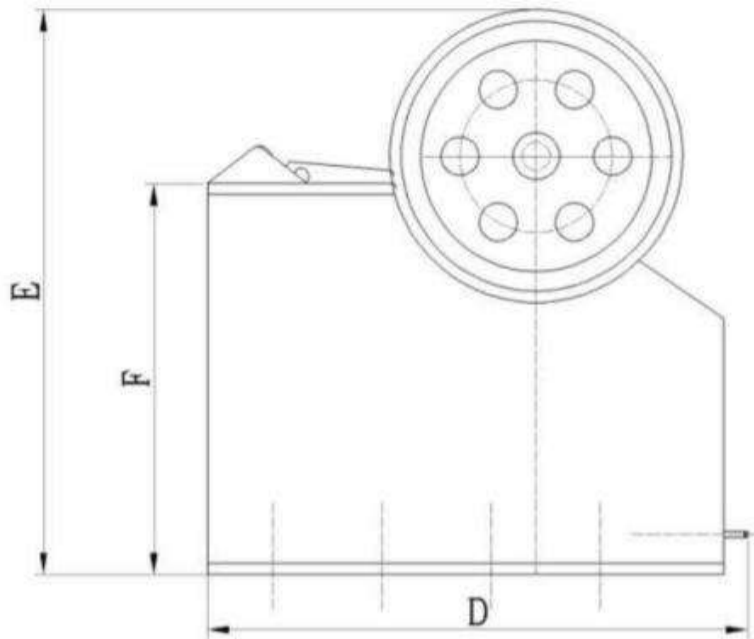


Jaw crusher is mainly consists of bracket, jaw, eccentric shaft, jaw plate and toggle plate etc. Eccentric shaft is driven to rotate by motor and jaw runs on adjusted track to crush materials in crushing chamber. The bracket is welded by steel plate. On the front arm of bracket, jaw plate is fixed by wedge-shaped bolt. Edge protection plate is equipped on inside wall of bracket to prevent abrasion.

The Moving jaw is a shaped casting with a kinetic jaw plate on the face. The upper part of jaw is hung on upper and lower parts of bracket and supported on ancon plate by eccentric shaft and roller bearing. There equipped flywheel and grooved pulley at both ends of eccentric shaft.







Dimension Chart

Model		PE250 × 400	PE400 × 600	PE500 × 750	PE600 × 900	PE750 × 1060	PE900 × 1200	PE1200 × 1500	PEX150 × 750	PEX250 × 750	PEX250 × 1000	PEX250 × 1200	PEX300 × 1300
A	mm	400	600	750	900	1060	1200	1500	750	750	1000	1200	1300
B	mm	250	400	500	600	750	900	1200	150	250	250	250	300
C	mm	1050	1750	2050	1850	2185	2000	3732	1580	1750	2000	2150	2320
D	mm	1180	1680	1930	2490	2580	3600	4200	1150	1560	1590	1590	1750
E	mm	1300	1680	1850	2350	3100	2530	3843	1080	1330	1460	1390	1724
F	mm	680	950	1160	1500	2290	2180	3480	580	850	860	850	930
Weight	ton	2.8	6.5	12	17.5	29	52	100.9	3.8	5.5	7	8.5	13

Notice: Any changes of the data in the chart, please pardon us for not informing you in advance.

**Features:**

- \* simple structure and easy maintenance;
- \* stable performance and low operation cost;
- \* good shape in final product and high crushing ratio.



**Free Technical Support available via:**

MSN:

Rockeyhan@hotmail.com

E-Mail:

Support@kunmingzhongji.com

Website:

<http://www.kunmingzhongji.com>



# Capacity Chart

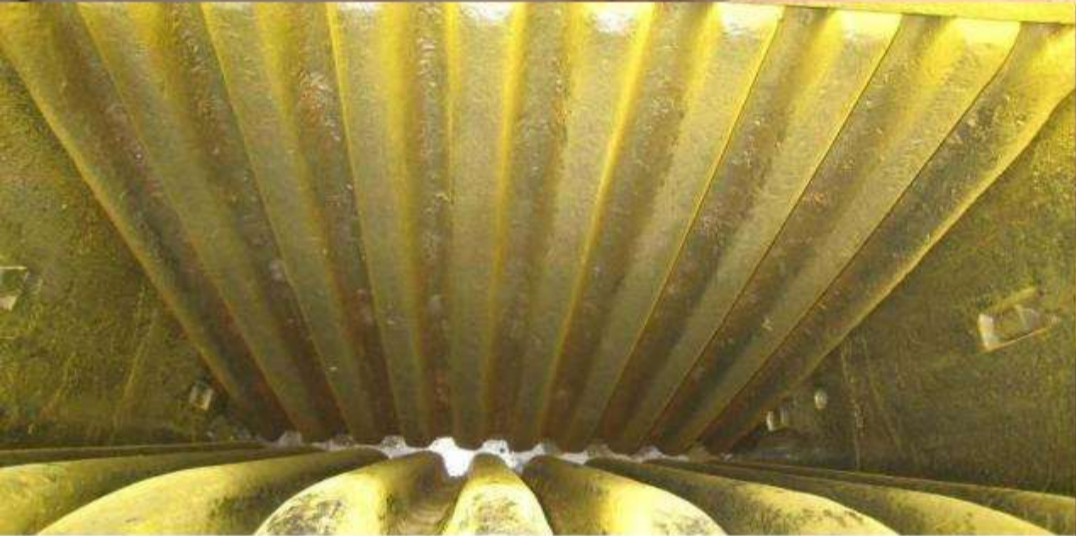
Model	PE 250x400	PE 400x600	PE 500x750	PE 600x900	PE 750x1060	PE 900x1200	PE 1200x1500	PE 150x750	PE 250x750	PE 250x1000	PE 250x1200
Length of Feeding Mouth(mm)	400	600	750	900	1060	1200	1500	750	750	1000	1200
Width of Feeding Mouth(mm)	250	400	500	600	750	900	1200	150	250	250	250
Max Feeding size(mm)	210	340	425	500	630	750	1020	125	210	210	210
Power(kw)	12	30-37	45-55	55-75	90-110	110-132	160-200	15	22	30	37
Rolling Speed(rpm)	300	280	280	260	260	220	220	320	330	330	330
Size of Final Product(mm)	Adjusted outputting Mouth(mm)	t/h	t/h	t/h	t/h	t/h	t/h	t/h	t/h	t/h	t/h
0-30	0-20	5						5-7			
0-35	0-25	8						7-10	15-18	15-18	20-24
0-45	0-40	15	15-20					10-13	18-20	18-25	24-30
0-60	0-450	20	20-25					13-16	22-25	26-35	32-45
0-75	0-50	25	25-30	40-58				16-20	26-30	38-45	48-58
0-90	0-60		30-42	58-78	90-110				30-33	50-55	60-65
0-105	0-70		42-50	76-90	103-120						
0-120	0-80		50-55	89-100	115-128	110-132					
0-135	0-90		55-60	98-120	128-140	162-180	220-260				
0-150	0-100		60-65	110-125	142-165	215-250	278-320				
0-185	0-125				161-170	265-300	25-360				
0-225	0-150				176-180	320-350	380-440	400-450			
0-260	0-175				180-195		450-520	466-510			
0-300	0-200							532-580			
0-340	0-225							598-640			
0-375	0-250							664-730			
0-410	0-275							732-800			
0-450	0-300							800-850			

\* The above figures represent through the jaw crusher capacity, which are based on a feed material with an average specific gravity of 2.7t/m<sup>3</sup>, a maximum feed size that will enter the jaw crusher without bridging and material finer than the crushers as graduation, bulk density, moisture, clay content and crushability.

Measurement of the jaw crusher's closed side setting varies depending on the jaw profile that is being used and has an impact on the crusher's capacity and product graduation. The following factors will enhance jaw crusher capacity and performance:

1. Proper selection of the jaw;
2. Proper feed graduation;
3. Controlled feed rate;
4. Sufficient feeder capacity and width;
5. Adequate crusher discharge area;
6. Discharge conveyor sized to convey maximum crusher capacity.





## *Brief Intro of Jaw Crusher* (2010.10.05 v1.0)

**Yunnan Kunming Heavy Mining Machinery Co., LTD**

**Address: 8km, Guikun Road, National Development Zone, Kunming City, Yunnan Province, China**

**Tel: +86-871-3540976 +86-13508712656**

**MSN: [Rockeyhan@hotmail.com](mailto:Rockeyhan@hotmail.com)**

**E-mail: [Support@Kunmingzhongji.com](mailto:Support@Kunmingzhongji.com)**